



GMT MONTHLY MEMBERSHIP PROGRESS REPORT

Results as of: 2/29/2020

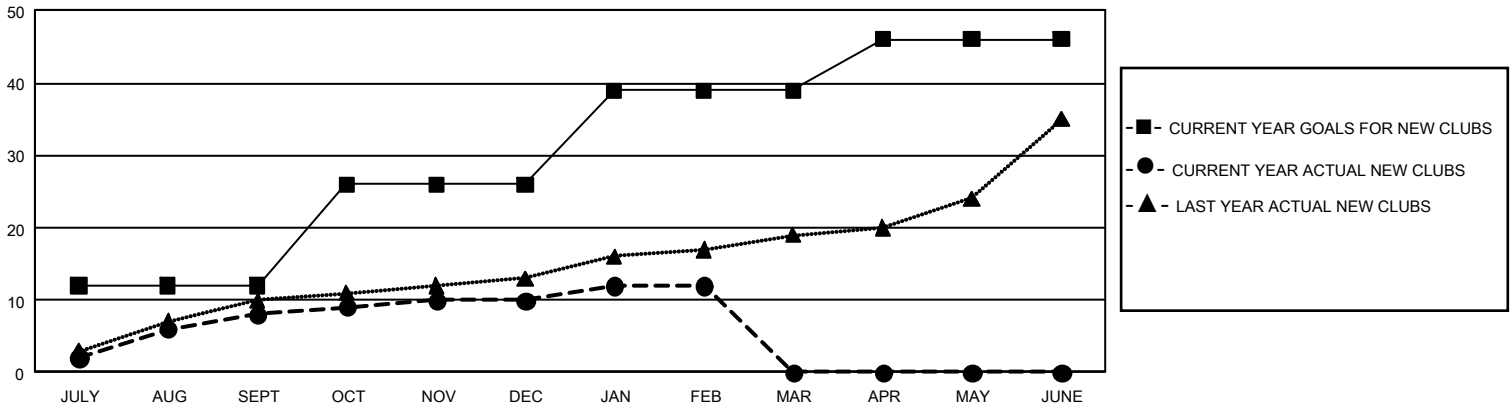
GMT Constitutional Area 3, Group C

GMT: OPEN

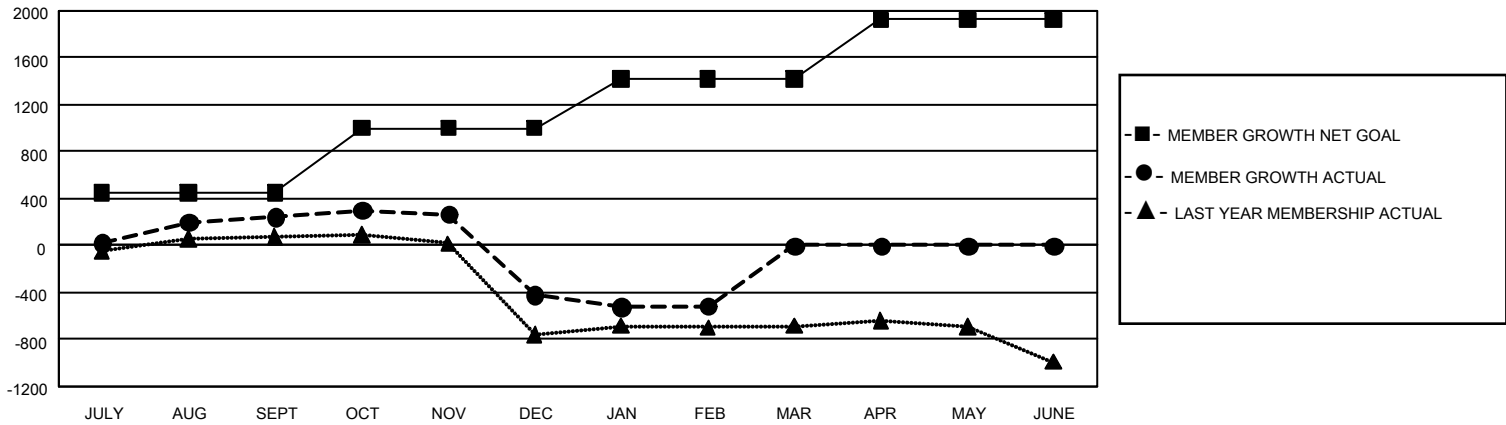
REPORT DOES NOT INCLUDE CLUBS IN UNDISTRICTED AREAS.

Clubs				Members			
RESULTS FOR 2019-2020				RESULTS FOR 2019-2020			
QUARTER	NEW CLUB GOAL	NEW CLUBS	DROPPED CLUBS	QUARTER	MEMBER GROWTH NET GOAL	MEMBER GROWTH ACTUAL	DROPPED MEMBERS ACTUAL (including transfers)
JULY/AUG/SEPT	36	8	3	JULY/AUG/SEPT	1,350	686	395
OCT/NOV/DEC	42	2	14	OCT/NOV/DEC	1,650	392	1,024
JAN/FEB/MAR	39	2	9	JAN/FEB/MAR	1,260	278	290
APR/MAY/JUNE	21	0	0	APR/MAY/JUNE	1,515	0	0

GOALS AND ACTUAL NEW CLUBS CUMULATIVE



GOALS AND ACTUAL MEMBERS CUMULATIVE



DROPPED CLUBS: 26	263 CLUBS OF 648 ADDED 1 OR MORE NEW MEMBERS	GENDER DISTRIBUTION MALE 6,092 (44.60%) FEMALE 7,568 (55.40%)
DROPPED MEMBERS DECEASED 51 CLUB CANCELLED 290 OTHER 1,364 <hr/> TOTAL 1,705	CLICK HERE FOR CUMULATIVE MEMBERSHIP DATA	TOTAL FAMILY UNIT MEMBERS 5,111 FAMILY MEMBERS PAYING HALF DUES 2,979